

# 94 Hargrave Capri Motoryacht

CUSTOM CREATION BRINGS  
OUT OWNER ORIGINALITY

BY TOM THOMPSON



**THE DESIGN OF A CUSTOM YACHT** is not dictated by a marketing committee. It's an expression of the unique style of the owner. Hargrave Custom Yachts of Ft. Lauderdale is among the foremost builders of this type of vessel. Having been aboard several Hargraves in the past, I had an idea of what I might expect to find on *Sugar Too*, a 94-foot Capri model. Nonetheless, I still wasn't prepared for it all.

## SKYLounge

The owners of *Sugar Too*, Kelly and Terry Bettis, live in Texas, but keep

the yacht in Miami Beach as a second home. She is crewed by another couple, Kasey and Rhonda Kadrey,

captain and first mate respectively. The Kadreys were gracious hosts for a sea trial that was more pleasure than work for me. But then, that's what the Bettises had in mind when they commissioned *Sugar Too*. She's a special place meant for enjoyment.

One thing that has always impressed me about Hargraves is their superb woodwork. On *Sugar Too* there

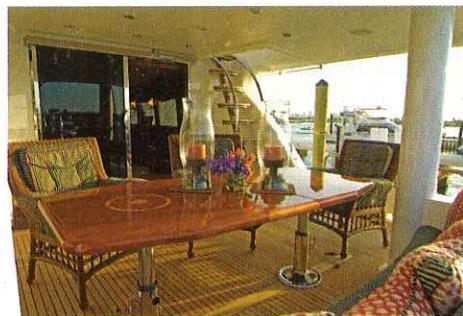
## An **Inside** Look



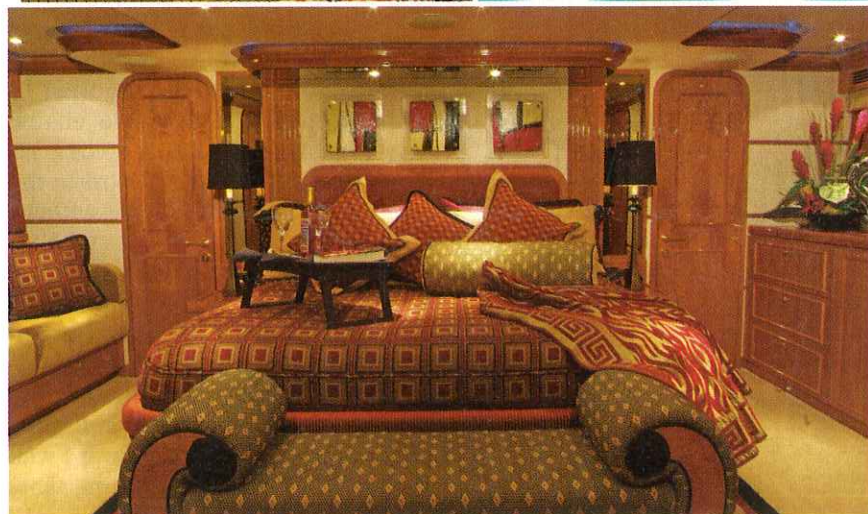
### TESTER'S OPINION

"*Sugar Too* is a beautiful boat with a style all her own. She's also an example of first-rate collaboration and communication between an owner and a builder."

Customized furnishings and layouts grace Hargrave's new 94-foot Capri model, which includes sweeping staircases, vast accommodations and beautifully finished woodwork.



was an elegant mix of common and exotic woods used in the cabinetry that was as much of an artistic expression as the paintings, vases and other works of art on display. The wood tones are countered with a soft blend of fabrics and upholstery that enhances the warmth of the cabin spaces throughout the boat. Granite is used for many of the countertops,



## 94 Hargrave Capri Motoryacht

### SPECIFICATIONS

LOA	94 ft., 8 in.
Beam	20 ft.
Draft	5 ft., 10 in.
Weight (dry)	200,000 lbs.
Fuel capacity	3,200 gals.
Water capacity	600 gals.
Sleeps	9
Price, as tested	\$5,300,000

### PERFORMANCE SPECS

Top speed	21 knots
MPG @ 17-knot cruise	2
Range @ 17-knot cruise (w/10% reserve)	577 nautical miles
Sound level @ cruise	56 dB in skylounge

### OPTIONAL FEATURES

Fully customizable. Three-ton chilled-water air-conditioning system, 2 32 kw Northern Lights gensets, Naiad stabilizer system, custom audio/video equipment in salon and staterooms, Sea Recovery 1,400 gallon per day water-maker, 10-person life raft.

### CONSTRUCTION

FRP

### COMPANY PROFILE

Years in business	36
Number of employees	48 (in U.S.)
Boat lines	Hargrave Custom Yachts

### BUILDER

Hargrave Custom Yachts, Ft. Lauderdale, FL;  
(800) 551-9590; www.hargrave.org

The most impressive thing about the ride is how quiet it is: I measured 56 dB in the skylounge at cruise.

and the owners chose colors and patterns to complement the wood, rather than contrast with it.

*Sugar Too's* crowning touch is her skylounge. The upper deck has generous room for both indoor and outdoor entertaining, but the air-conditioned space amidships is the place to be. The views from here are spectacular regardless of the weather. It's open to the helm area and has settee seating and a bar to port. In the starboard aft corner, there's a study desk that can be used as a computer station. A low cabinet along the forward starboard side hides a flat-screen TV that rises when summoned.

The helm is a high-tech wonderland. Three 17-inch Samsung LCD monitors display data gathered by computers from an array of sources, including radar, sonar and GPS. *Sugar Too* is equipped with satellite communication gear as well as satellite TV, so passengers and crew can be in touch with the outside world when they need to be.

The open deck area behind the skylounge holds a U-shaped seating area with a dining table, a bar with four stools and a couple of chaise lounges. An inflatable tender and a personal watercraft are stowed on deck immediately aft.

### AQUAHOLIC

On the main deck, there is a large open-air entertainment space aft. Between a bench seat at the transom and four separate chairs, the dining table can seat eight. There's a small wet bar on the port side — although, for full service, all you need to do is step through the doors to the salon. A fully equipped bar is just inside to port. At the salon's center, there's a conversation area made up of an L-shaped settee and two side chairs; they're near a cabinet that holds a 32-inch plasma TV on a lift. Doors in the cabinet also allow TV viewing without raising it.

The TV cabinet serves as a room divider between the salon and dining area. Wood columns at each end extend from the granite countertop to the ceiling. They match an identical pair flanking the magnificent wood and glass china cabinet along the forward wall of the dining area. The dining table

seats eight very comfortably.

*Sugar Too* has an eat-in galley. There's a U-shaped seating area forward at the windshield, plus a pair of flip-out stools attached to the granite-topped island work space. Counter space runs along both sides and holds every appliance and convenience you could need (including a wine cooler, which you don't need but might love to have).

### COMFORT FOR ALL

The crew's quarters are accessed from a stairway off the galley and occupy the forward area of the lower deck. *Sugar Too* has two sleeping cabins here, one with a queen berth, plus a full head with a stall shower and a lounge area.

*Sugar Too's* full-beam master suite is aft, just ahead of the engine room and is buffered by the his-and-hers head compartments. They're separated by a glass-enclosed stall shower. I got a sound level reading of 66 dB in the master suite while running at cruising speed, a testament to how well the boat is insulated. The master suite has three sole-to-overhead closets and a dressing area along the starboard side.

The lower deck of a 94 Hargrave Capri can be configured with four staterooms, but the Bettises chose to use one as an office, furnishing it with a countertop desk and a couch. The VIP suite has a queen-size berth, and the third stateroom has a double berth plus a drop-down Pullman berth.

### GET MOVING

*Sugar Too* has a top speed of 21 knots and cruises at 17 to 18 knots. She handles superbly. At cruising speed, she will take a hard-over turn with no lean; the turning radius is about two boat lengths.

The most impressive thing about the ride is how quiet it is: I measured 56 dB in the skylounge at cruise. The ambient sound level here is negligible, and you can't hear the engines. In the salon, it's slightly higher at 64 dB, but that's still nothing to complain about. What's more, there is no vibration.

It's just another testament to how well Hargrave builds boats. 🍷

📞 **CONTACT: HARGRAVE CUSTOM YACHTS, FT. LAUDERDALE, FL; (800) 551-9590; WWW.HARGRAVE.ORG**

**TOW vs. SALVAGE:** WHAT YOU DON'T KNOW COULD COST YOU BIG

**5 REASONS WHY YOU NEED A CAPTAIN**

FEBRUARY 2007

# Sea<sup>®</sup>

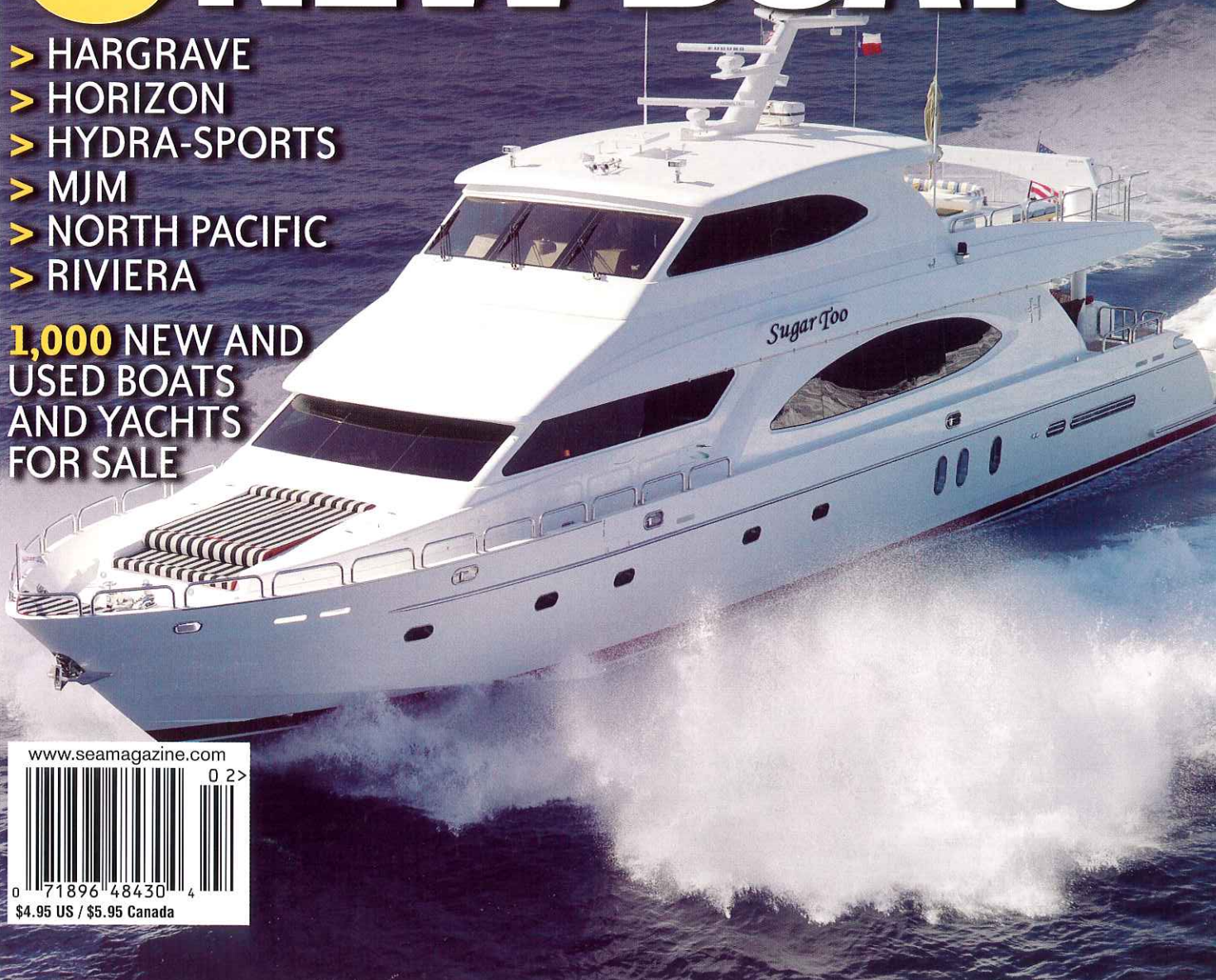
AMERICA'S WESTERN BOATING MAGAZINE



# 6 NEW BOATS

- > HARGRAVE
- > HORIZON
- > HYDRA-SPORTS
- > MJM
- > NORTH PACIFIC
- > RIVIERA

**1,000** NEW AND USED BOATS AND YACHTS FOR SALE



www.seamagazine.com



0 71896 48430 4  
\$4.95 US / \$5.95 Canada